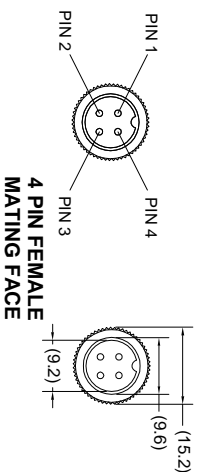
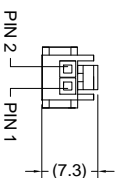


VIEW A



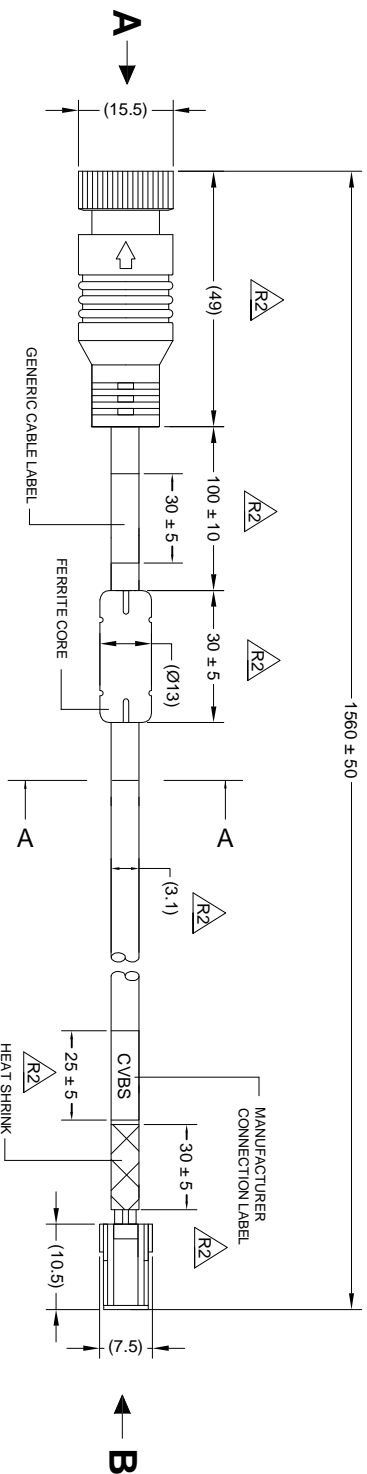
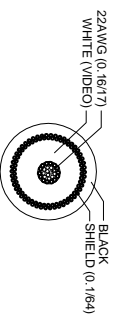
VIEW B



PIN #	WIRE COLOUR	DESCRIPTION
1	N/A	N/C
2	SHIELD	GND
3	N/A	N/C
4	WHITE	VIDEO

PIN #	WIRE COLOUR	DESCRIPTION
1	SHIELD	GND
2	WHITE	VIDEO

SECTION A-A



NOTES


1. FOR CABLE LABEL, REFER TO LATEST REVISION OF DRAWING BE -002644-XX-13.
2. INTERNAL CABLE SHOULD BE ONE CONTINUOUS LENGTH BETWEEN CONNECTORS.
3. CABLE PROVIDED IN A SUITABLE ADEQUATELY SIZED BAG.
4. CABLE LABEL IS FREE TO MOVE ALONG CABLE.
5. SHIELD TO BE COVERED WITH BLACK HEATSHRINK.
6. FERRITE SPECIFICATION: F2 R4 10X20X5, 50 @ 25MHZ, 120 @ 100MHZ.
7. WHEN SUPPLIED AS A SPARE PART FOR GIFTBOX LABEL, REFER TO LATEST REVISION OF DRAWING BE -002640-XX-13.

PROPRIETARY NOTICE

THIS DESIGN AND TECHNICAL INFORMATION APPEARING ON THIS DRAWING IS THE PROPERTY OF BRIGADE ELECTRONICS, AND IS DISCLOSED IN CONFIDENCE. IT IS NOT TO BE COPIED, REPRODUCED, REVEALED TO OR EXPLOITED BY OTHERS, EITHER IN WHOLE OR IN PART WITHOUT THE EXPRESS WRITTEN CONSENT OF BRIGADE ELECTRONICS.

Revision Notes			
R1 = MODEL NUMBER CHANGE FROM BN360-VB00015 TO BN360-VB01-L4015			
APA: Y1LEE 30/10/14	Drawn: P MISSEN	Checked: R BATES	Approved: B CHILDS Date: 30/10/14
FOR ORDERING CONTACT WITH ALAN DICKINSON FROM 10.30 AM TO 5.15 PM, MONDAY TO FRIDAY, 0110 1010. FOR FEEDBACK, CONTACT 01203 3 500000. EMAIL: 21.51@Y1LEE.LABEL, 21.51@Y1LEE.DIRECTLY, 0160 44323			
APA: A1JLEE	Drawn: W BEEZLEY	Checked: B CHILDS	Approved: D WALIN Date: 16/03/2016
R3 - Y1FBOX LABEL DETAILS ADDED TO NOTES			
APA: A1JLEE	Drawn: R BATES	Checked: D RICHARDSON	Approved: D WALIN Date: 25/07/16

Assembly Pl Approval YJLEE 21/10/14	Approved by B.CHILDS	Checked by R.BATES	Drawn by P.MISSEN
----------------------------------------	-------------------------	-----------------------	----------------------

Angle of Projection	Units		Scale	Released	Assembly Ref
	mm	N/A			
 Third Angle	Status RELEASED		BN360-VBV-L4015	23/10/14	-
Part No 4698			BE-002976-03-14		